

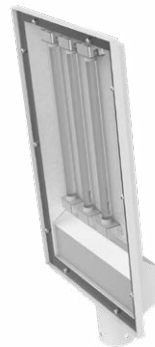


Benefits

- **Efficiency:** Can achieve up to 80% energy savings compared to traditional fittings
- **Minimal glare**
- **Precise** and uniform illumination enabling successful achievement of complex lighting designs
- **Comfortable** human centric lighting
- **Virtually zero** colour shift with angle
- **Low Maintenance:** Reducing costs and disruption caused by routine maintenance
- **LED Lifespan:** 133k hours minimum to L70. Tested in accordance with LM79, LM80 and TM21
- **Light Distribution:** Uniform distribution with a typical SHR of 1.5:1. Other beam spreads are available on request
- **Reliability:** Drive currents are kept low to ensure junction temperatures are optimal maximising longevity and reliability
- **Product Performance:** Excellent efficacy, due to ELR technology's precise control of light projection
- **Warranty:** 5 Years (please refer to T&C)

Polaris 3

Urban Area Luminaire



Mounting and Application



External



Pole Mount

Dimensions:	715 x 400 x 110 mm
Approx Weight:	3.3 Kg
Power:	66 W
Measured lumen output:	7522 lm
Colour Rendering:	> 80 CRI as standard
Colour Temperature:	4000K - as standard (available range from 3000-6500K)
Enclosure Material:	White Powder Coated Aluminium
Intelligent controls:	Dimmable, 1-10 V, DALI, and others on request
PSU Specification:	220-240 V 50-60 Hz
Inrush current:	45 A 100 µsec
Ambient Temperature:	-20 to +35 ° C
Ingress Protection:	IP65
Emergency Option:	Maintained with 3 hours of operation at 785 lumens from a NiMH Battery
Diffuser:	Optional
Standard beam angle:	88° as standard, 34° 134° 2x68° available on request